

COMMUNICATION SYSTEM DESIGN & INTEGRATION

Streamlining Connectivity for Seamless Operations

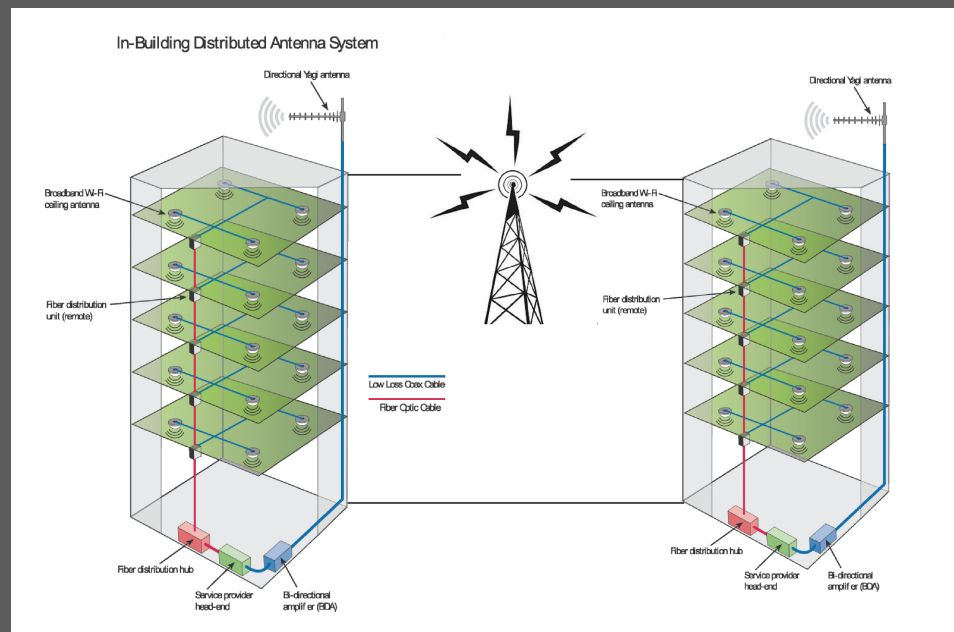
ProLogic ITS is a leading provider of two-way radio systems, microwave systems, and in-building wireless coverage solutions for public/private schools, colleges, universities, and local governments. We have deep levels of expertise with FCC regulations, public safety codes, P25 interoperability protocols, and key industry installation standards including DMR and NXDN networking and more.

Successfully deploying a wireless network solution is more than just installing a bunch of access points and hoping that they work. Wireless networks have grown increasingly complex and they require the right design for business operations to run smoothly.

With most organizations today using cloud-based applications and IoT devices, all of which require WiFi connectivity, it's mission-critical that every business has a reliable wireless connection to keep employees working and other users satisfied. Our in-building wireless coverage solutions include two-way radio coverage, WiFi coverage, LTE coverage and cellular coverage. ProLogic ITS has the expertise and capability to perform RF site surveys so that we can help you design and deploy the right solution for your needs from the beginning of the project.

For enhanced or expanded coverage outside of your buildings, we also have the ability to design and deploy highly reliable microwave systems.

Microwave back-hauls and networks have several advantages over traditional wired networks. Some of the advantages include being able to deploy more quickly, they are more flexible, and are more cost-effective than wired networks. They also have lower latency and higher bandwidth than wired networks.



UNLOCK THE POWER OF SEAMLESS COMMUNICATION:

Enhance collaboration, improve productivity, and streamline your operations with our Communications System Design & Integration services.

Why Choose Our Communications System Design & Integration Services?

1. **Tailored Solutions:** We understand that every organization has unique communication requirements. Our team of experienced professionals will work closely with you to assess your needs, design a customized solution, and integrate it seamlessly into your existing infrastructure.
2. **Scalability:** As your business grows, so do your communication needs. Our solutions are designed with scalability in mind, allowing you to easily expand your system as your organization evolves.
3. **Cost-Effectiveness:** We believe in delivering value to our clients. Our experts leverage their industry knowledge and partnerships to provide cost-effective solutions without compromising on quality or performance.
4. **Seamless Integration:** We specialize in integrating various communication technologies, such as voice, video, data, and wireless systems, into a unified platform. This integration streamlines your operations, improves collaboration, and enhances overall productivity.
5. **Reliability and Security:** Communication is the lifeblood of any organization, and we prioritize reliability and security in our solutions. We implement robust measures to ensure data integrity, confidentiality, and protection against cyber threats.

Our Comprehensive Service Offerings:

1. **Needs Assessment:** Our team will conduct a thorough analysis of your current communication infrastructure, identify gaps and bottlenecks, and determine your unique requirements.
2. **Design and Planning:** Based on the assessment, we will develop a tailored communication system design that aligns with your business goals and maximizes efficiency.
3. **Integration and Implementation:** Our experts will seamlessly integrate the new communication system into your existing infrastructure, minimizing downtime and disruption.
4. **Testing and Quality Assurance:** We rigorously test the integrated system to ensure optimal performance, reliability, and compatibility with your organization's workflows.
5. **Training and Support:** We provide comprehensive training to your staff, enabling them to utilize the new system effectively. Our dedicated support team is available to address any concerns or issues that may arise post-implementation.
6. **Future-proofing:** We stay up-to-date with the latest trends and advancements in communication technology, ensuring that your system remains future-proof and adaptable to evolving business needs.

CONTACT US TODAY

Schedule a consultation and take your organization's communication infrastructure to the next level. Experience the power of seamless connectivity!